



Rabbit anti Claudin 5 Polyclonal Antibody

Alternative Name(s): CLDN5; AWAL; BEC1; TMVCF; CPETRL1

Order Information

- **Description:** Claudin 5
- **Catalogue:** 500-3754
- **Lot:** See label
- **Size:** 100ug/200ul
- **Host:** Rabbit
- **Clone:** nan
- **Application:** IHC(P), WB
- **Reactivity:** Hu, Ms

ANTIGEN PREPARATION

A synthetic peptide from C-terminus of human claudin 5 protein.

BACKGROUND

The claudin superfamily consists of many structurally related proteins in humans. These proteins, which include claudin 1 through 18, are important structural and functional components of tight junctions in paracellular transport. The tight junctions are specialized regions of cell to cell contact. Claudins are located in both epithelial and endothelial cells in all tight junction-bearing tissues. Claudins, which consist of four trans-membrane domains and two extracellular loops, make up tight junction strands. Different tissues exhibit different Claudin composition. Claudin-5 is a tight junction protein expressed in endothelial cells and in some epithelial cells. It has been shown as a marker in angiosarcoma.

PURIFICATION

The Rabbit IgG is purified by Epitope Affinity Purification

FORMULATION

This affinity purified antibody is supplied in sterile Phosphatebuffered saline (pH7.2) containing antibody stabilizer

SPECIFICITY

This antibody recognizes human and mice Claudin 5 . The other species not tested.

STORAGE

The antibodies are stable for 24 months from date of receipt when stored at -20oC to -70oC. The antibodies can be stored at 2oC-8oC for three month without detectable loss of activity. Avoid repeated freezing-thawing cycles.

APPLICATIONS/SUGGESTED WORKING DILUTIONS*

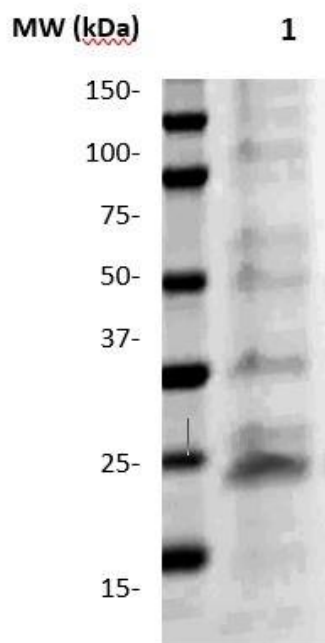
- Western Blot: 0.1-1 µg/ml
- ELISA: 0.01-0.1 µg/ml
- Immunoprecipitation: 2-5 µg/ml
- IHC: 2-10 µg/ml
- Flow cytometry: Not tested
- Molecular Weight: 20.0
- Positive Control: Kidney Tissue
- Cellular Location: Cell Membrane

*Optimal dilutions should be determined by researchers for the specific applications.

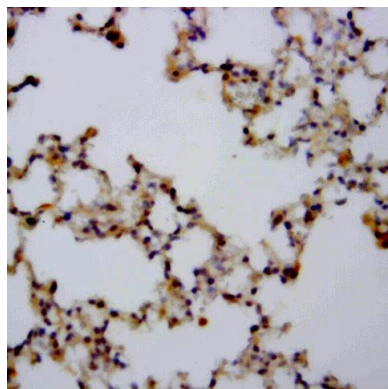
FOR RESEARCH USE ONLY.

AbboMax, Inc 2528 Qume Drive, Suite 8, San Jose, California 95131, USA
1 408-573-1898 (Tel). 1 408-573-1858 (Fax). www.abbomax.com info@abbomax.com

DATA ATTACHMENTS



Western Blot: The Cell lysate derived from mouse lung tissue was immunoprobed by Rabbit anti-Claudin 5 (Cat#500-3754) at 1:500. A major immunoreactive band is observed around ~20kDa.



Immunohistochemistry: Human lung tissue (FFPE) stained with Anti-Claudin 5 antibody (Cat# 500-3754) at 1:100 for 10 min @ RT. Staining of formalin-fixed tissue requires boiling tissue sections in 10 mM Citrate Buffer, pH 6.0 for 10 min followed by cooling at RT for 20 min.

REFERENCES

FOR RESEARCH USE ONLY.

AbboMax, Inc 2528 Qume Drive, Suite 8, San Jose, California 95131, USA
1 408-573-1898 (Tel). 1 408-573-1858 (Fax). www.abbomax.com info@abbomax.com